

Calibration of the VPP Pedalset by DXTweak

After connecting the pedals by the USB-Port the following equipment should emerge in DXTweak:

Over that NEXT (1) button click up to the Joywarrrior A10-16.

To configure the brake please choose the y axis (2). Here you see the important data for the calibration. (3)

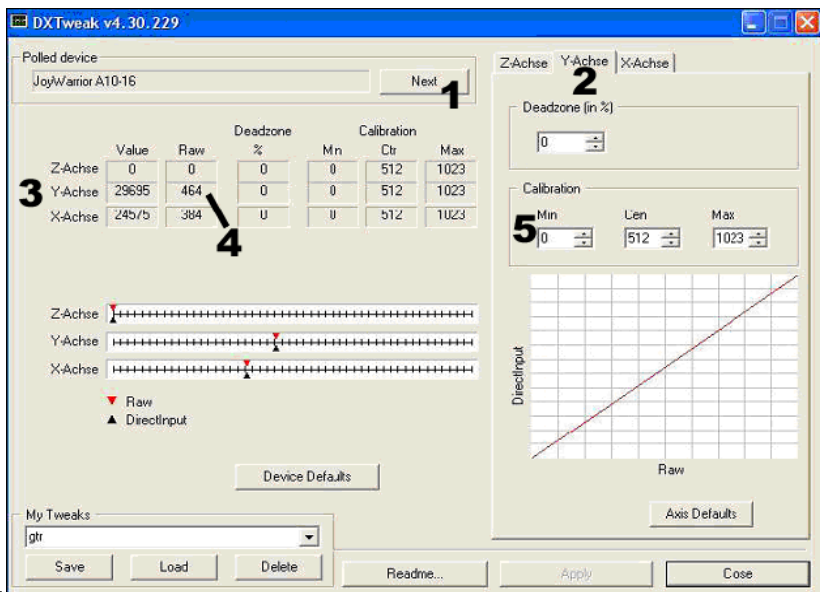


Fig. 1

Through the brake pedal changes the RAW Y axle steps value gradually. Here the RAW value of the not stepped brake is to be seen. (4) This amounts to here 464, this value depends upon pedal travel.

Register this value (you should register your indicated value) here (5) and press Apply (6).

Now step the pedal fully till the end and notice the Raw-Value of this position. Register this value here (7) and press Apply.

The curve should approximately look as the curve in the following picture (Fig.2)

Now please register a value that lies in the middle between the other two values here (8) and press Apply.

At the brake pedal the axle is inverted, so just put the smaller value to (5) and the bigger to (7).

Afterwards the y axis should look as in the next picture! (Fig.3)

This black arrow should stand with not stepped brake here (9), with completely depressed pedal completely right. If this is the case you can do the same procedure with the other axes. Please note to switch that axes by clicking here (10).

If all axes are done you can store your adjustments under My Tweaks as profile (11).

Close the program and use your pedalset.

If there is a jittering of the min RAW value please register the higher number. If e.g. the value jitters between 464 and 466 (jumps back and forth here) increase this value to 466. Do not forget to press Apply!

Now all problems should be solved. The VPP team wishes you much fun!

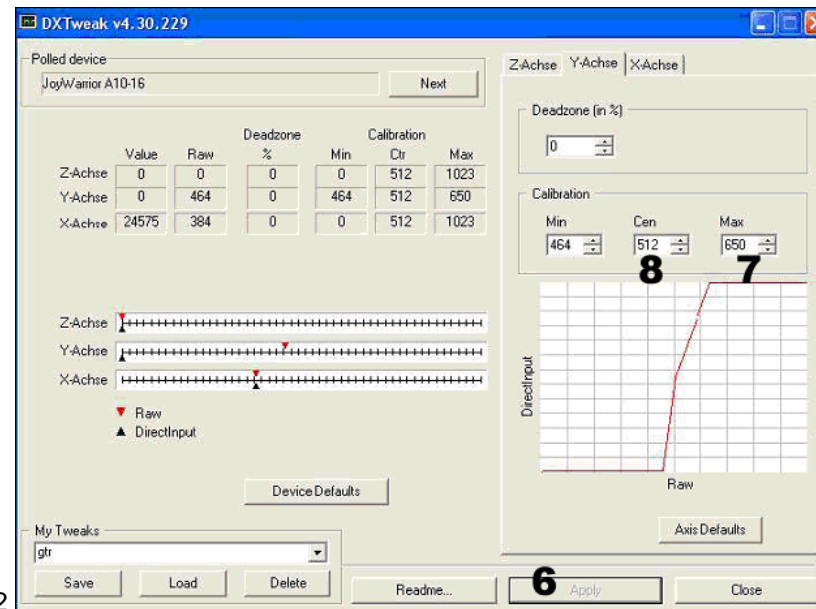


Fig.2

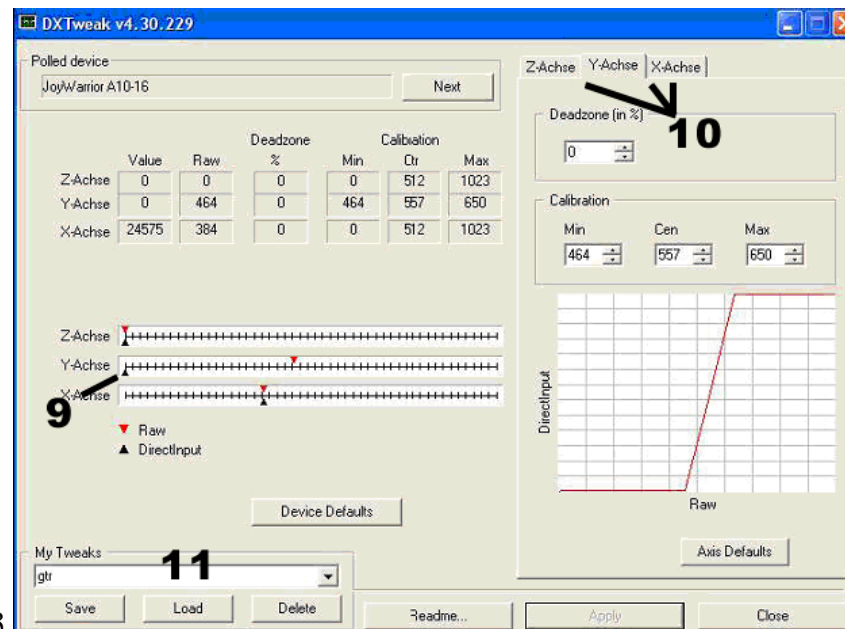


Fig.3